

Yale

50⁺ BEAUTIFUL HOUSES IN INDIA

INDIA'S BEST HOUSES TOURS | EXTERIOR - INTERIOR | VOLUME- 02 (2024-25)

DESIGNED BY DESIGN WORK GROUP & PHOTOGRAPHED BY VINAY PANJWANI

E-BOOK
DIGITAL COPY

 THE ARCHITECT'S
DIARY.COM

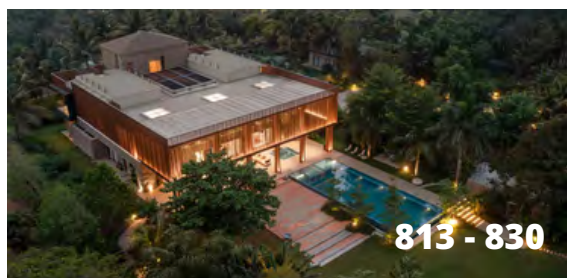
43

HOSAPETE MANAE
by Cadence Architects



41

ULTIMATE HOUSE
by Studio 2+2



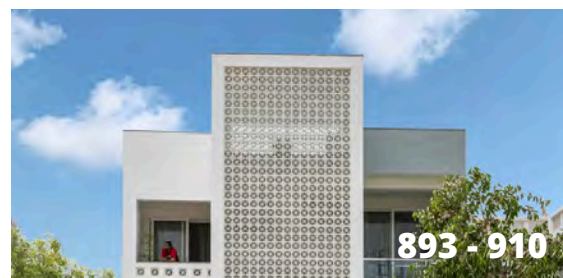
44

A HOME IN THE CLOUDS
by Research and Enquiry Into Design



45

THE ANNEXE AT ANAND
by INI Design Studio



46

WHITE SCREEN HOUSE
by The Design Route

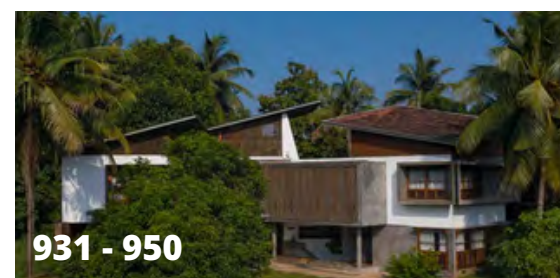
47

WEEKEND HOME
by Studio Roots



48

CHOLA HOUSE
by Art on Architecture



49

FREE SPIRITED BY THE HILLS
by House of Ruya



50

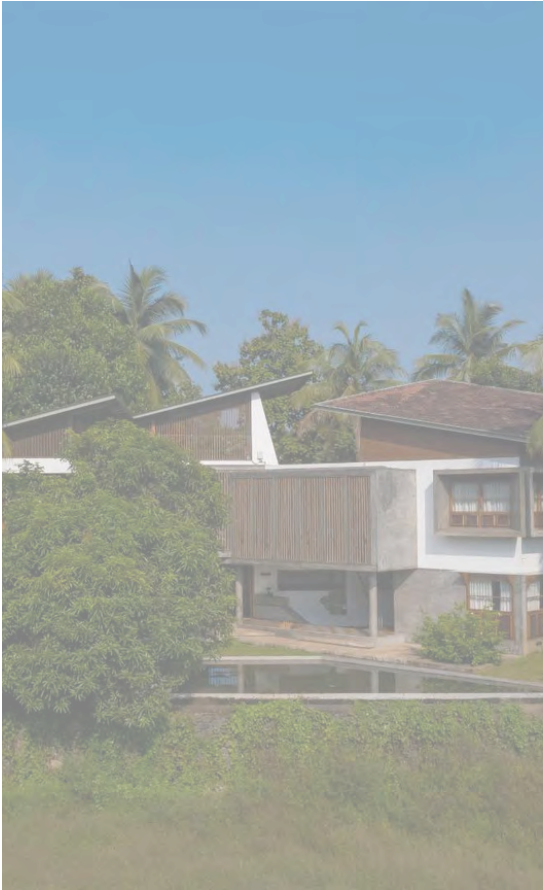
ABHIKRAM HOUSE
by Khosla Associates

51

CORNER HOUSE
by DADA Partners



CLASSIC CONTEMPORARY





THE ANNEXE AT ANAND

BY INI DESIGN STUDIO
PHOTOGRAPHY BY KARAN GAJJAR



A LEGACY REIMAGINED SUSTAINABLY

**THE HOME REFLECTS CENTURIES OF WISDOM AND
OFFERS SUSTAINABLE SOLUTIONS**

The home reflects centuries of wisdom and offers sustainable solutions. The extension of an existing multi-generational family house, it has been crafted to cater to the expanding needs of the family and their evolving lifestyle.

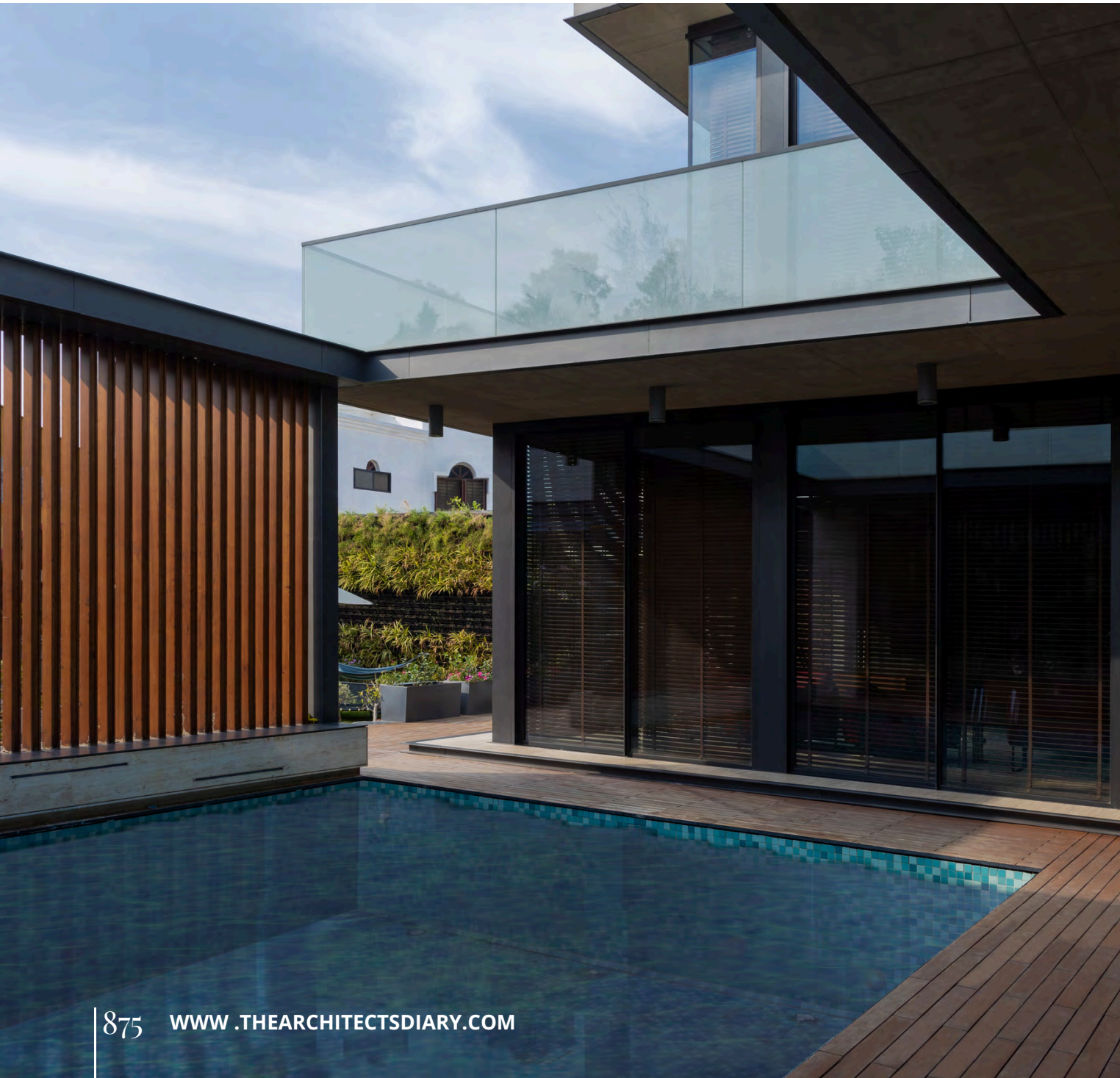
In today's embrace of innovation and progress, traditional architecture serves as a timeless link to our heritage. It fosters a sense of community and connection with the past, creating spaces where families can thrive and traditions can be preserved. A home is more than just a physical structure; it embodies the values, culture, and aspirations of its occupants. With a built-up area of 4500 square feet, 'The Annexe' presents an exquisite manifestation of minimalist design, embodying a subtle and unpretentious elegance.



Located within the tranquil environs of Anand city in Gujarat, 'The Annexe' stands as an embodiment of the delicate equilibrium between contemporary living and the deep-rooted principles of Indian culture.



Exemplifying a modern aesthetic, the house sits as a sleek, elevated structure juxtaposed against a monolithic expression of travertine stone. It is accentuated by subtle hints of concrete, metal, and wood detailed to perfection.



Inspired by traditional Indian homes, the spatial layout centers around a semi-covered courtyard.

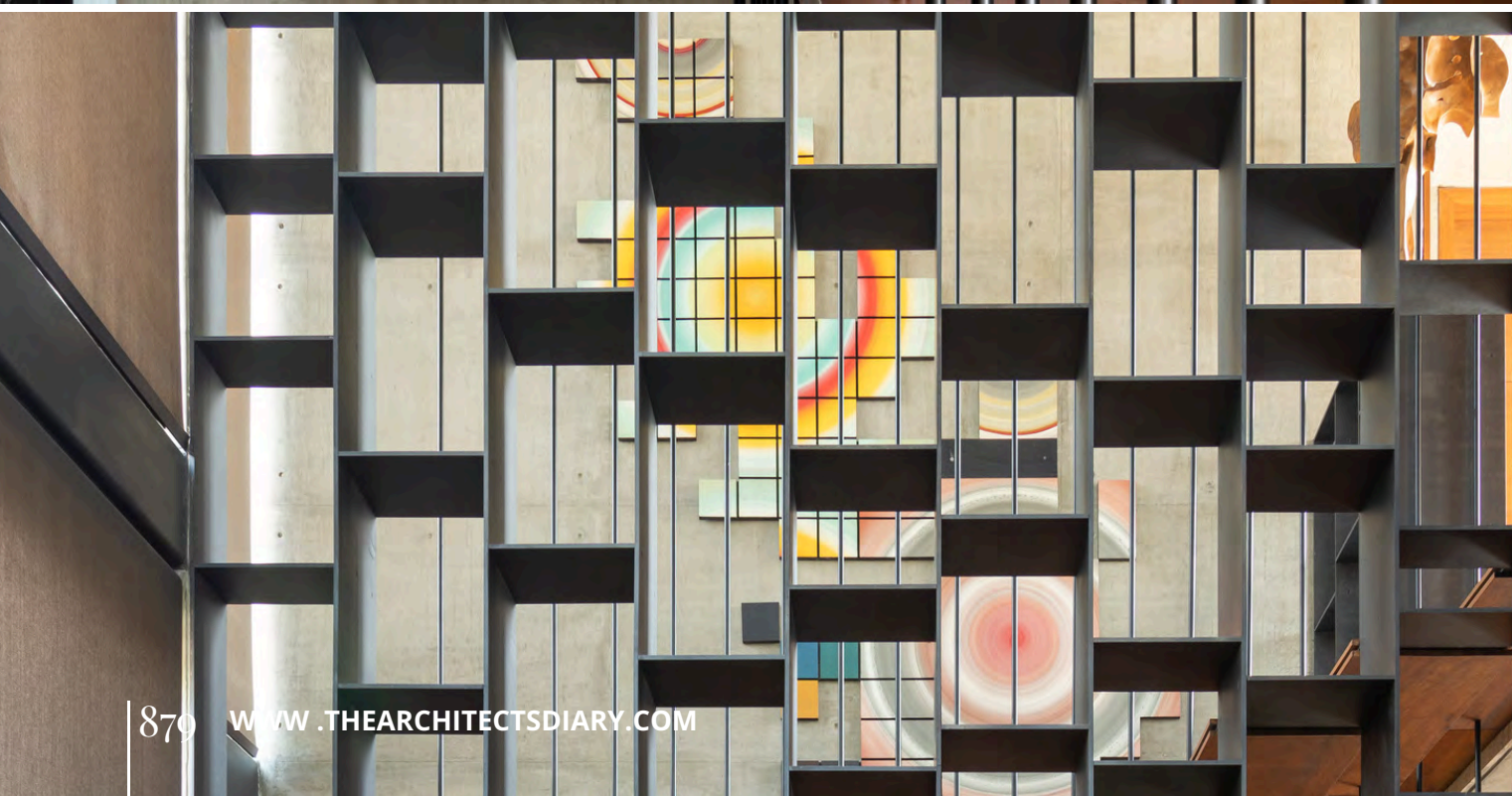
Enclosed by family spaces and an adjoining lawn, this central courtyard acts as the heart of the abode. The upper level of the dwelling, showcases a captivating combination of glass, wood, and floating concrete canopies.





It is adorned with metal accents along their edges, and is dedicated to private quarters that overlook the courtyard and pool. Abundant windows provide panoramic vistas that seamlessly connect the interior and exterior spaces. The compound wall, utilizing locally sourced stone as cladding and in gabion form, creates a sense of tranquillity and seclusion.

It shields the abode from the clamour of the bustling street and creating a peaceful haven. Embracing a holistic approach to sustainability,



'The Annexe' interweaves traditional wisdom with modern innovations. Passive cooling techniques, such as courtyards and verandas, create comfortable microclimates.







Strategic placement of windows, shading devices, and thermal mass optimizes energy efficiency. LED lighting, motion sensors, and smart home technology further enhance energy conservation and user convenience.

Real-time energy monitoring enables informed decisions on energy optimization, while Building Integrated Photovoltaics (BIPV) seamlessly incorporates solar panels into building materials, transforming surfaces into solar energy generators without compromising on aesthetics.



ABOUT FIRM

"INI Design Studio is a multidisciplinary design firm with a diverse portfolio offering professional consulting services in Architecture, Engineering, Planning, Urban Design, Landscape, Sustainability, Interiors, Research and Art. INI stands for ideas that are driven by a number of I's such as Inquiry, Imagination, Innovation, Inspiration, Inclusiveness and many more I's. But most importantly it stands for Integrated Ideas, referring to the integrated and collaborative nature of our practice and out of the box design ideas."



JAYESH HARIYANI

Jayesh Hariyani is the Founder and Chairman of INI Design Studio. He previously worked at Stantec as a Managing Director, Senior Principal. Jayesh Hariyani attended CEPT University. Jayesh Hariyani receives the highest honor of FAIA given to an Architect by the American Institute of Architects (AIA).

FACT FILE

Design Firm: INI Design Studio

Project Size: 4500 Sq. ft

Location: Anand, Gujarat, India

Photography: The Space Tracing Company

DRAWINGS & DETAILING

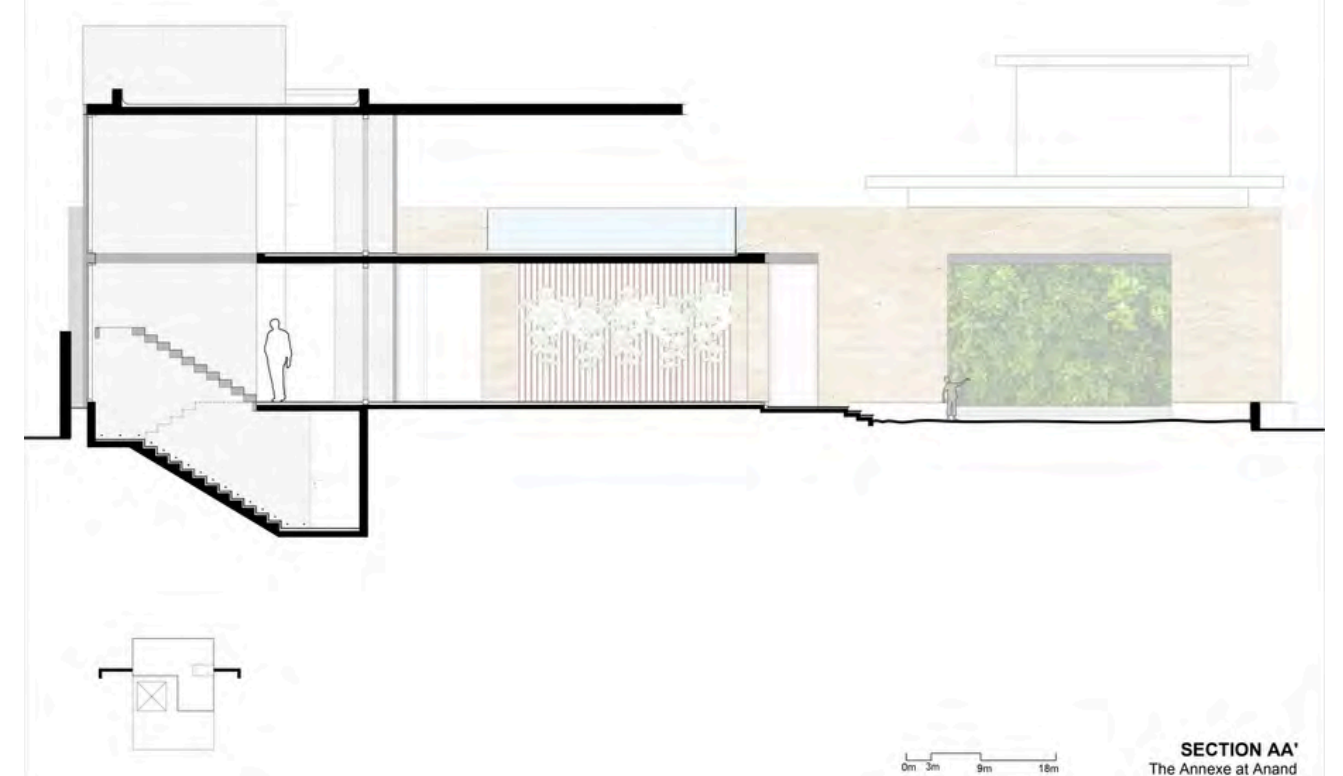


SOUTH ELEVATION
Residence for Rahul Patel

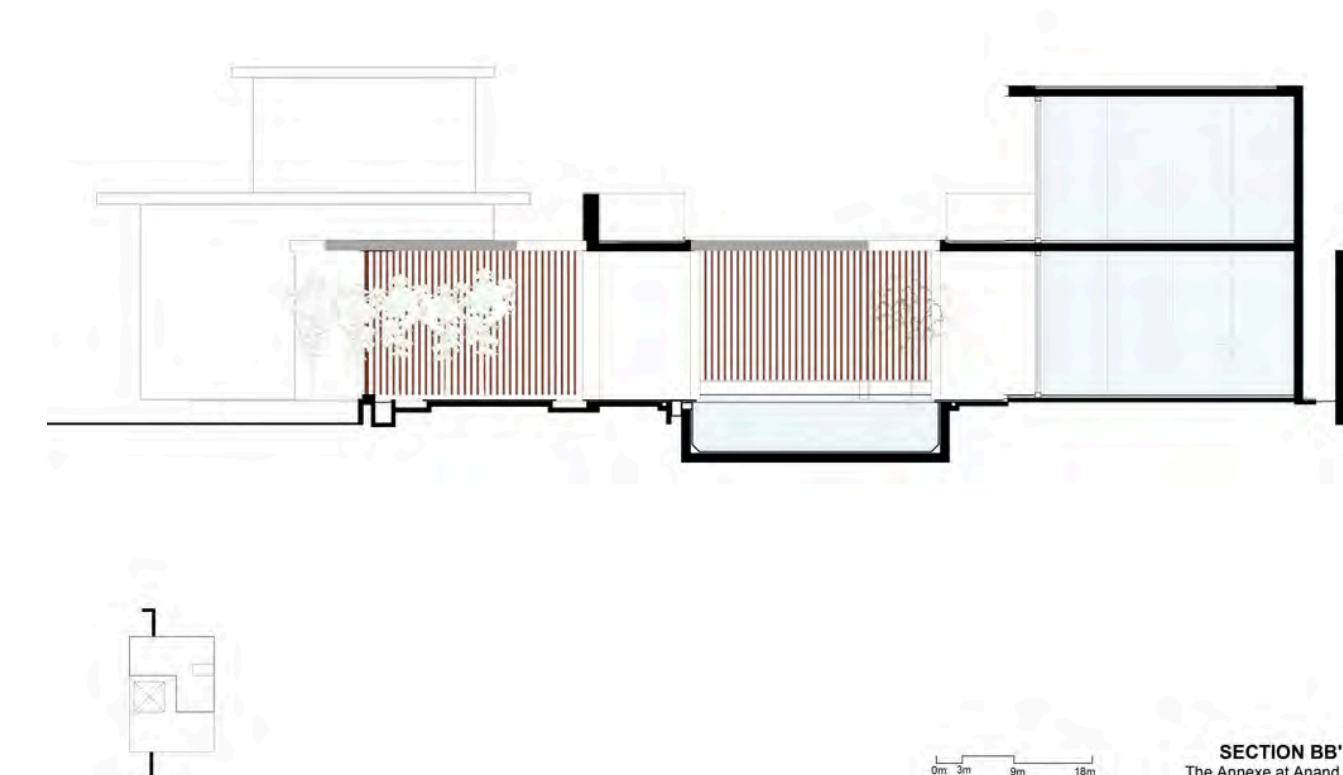


NORTH ELEVATION
The Annexe at Anand

Biophilic design elements such as living green walls, indoor gardens, and natural light improve indoor air quality and mitigate the heat island effect. Energy storage solutions, like advanced batteries or flywheel systems, optimize energy utilization by storing excess solar energy for later use, reducing reliance on the grid. Internet of Things (IoT) sensors gather data on environmental conditions, occupancy patterns, and energy usage, enabling automation processes and promoting sustainable practices throughout the



SECTION AA'
The Annexe at Anand



SECTION BB'
The Annexe at Anand

CONCEPTUALISING DIAGRAM

